



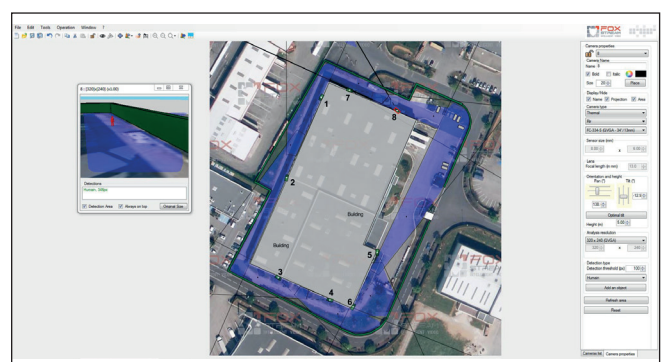
# FoxTool

## Project Design Study

The FoxTool software was developed to generate, on the basis of a ground plan, the prerequisites for camera locations. They take into account the camera height, inclination, the focal length, the sensor size and the areas on the ground that FoxVigi can analyze. FoxTool studies therefore represent a complete & concrete security solution: by involving the client and not only the integrator, the sales efficiency is increased.

FoxTool represents the ideal tool to **design a project and concretely understand what material will be needed** to obtain the best perimeter protection possible. It also allows to realize what obstacles can impact the camera's visibility, such as walls, poles...

The **new 3D possibilities** help simulate the site's specific features by adding object blocks to represent walls, buildings or cars and observe the impact on the detection and adjust accordingly the placement of the cameras or choice of lens/manufacture.



## New features

FoxTool's latest version includes several new useful functionalities:

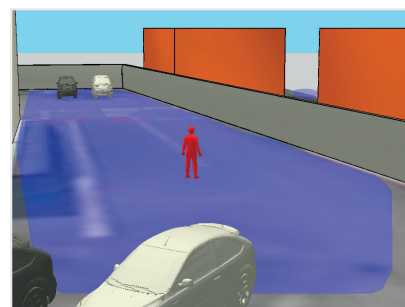
➤ **3D objects** help simulate the site's specific features and bring more reality to your project. By adding object blocks to represent walls, buildings or cars, observe the impact on the detection and adjust accordingly the cameras' locations or choice of lens/manufacturer.

➤ **Camera list:** a list of the main manufacturer has been added, to make it easier and faster when building your Security Solution. Simply select the manufacturer, then the camera model and lens and observe the difference in the area of detection.

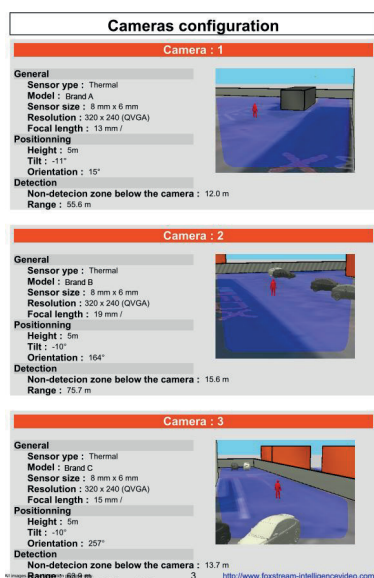
➤ **Map Export:** the map you create can now be exported as an image. Easy, convenient, intuitive.

➤ **Comments:** comments can be added to the map to facilitate exchanges between client/integrator, ask questions, bring up an issue, highlight a specific need, etc.

➤ **Detailed Reports:** reports contain further information, such as the description of each camera, useful detection distances, 3D images and a recap.



## Reports



FoxTool allows to export and print pdf reports that summarize the different camera information such as the description of each camera (manufacturer, model), the distance of the non-detected area, and the maximum distance of detection.

A 3D image of the camera view is joined to each camera description.

At the end of the report, a summary recaps all the cameras.

### Synthesis

Sensor type	Manufacturer	Model	Focal length	Quantity
Thermal	Custom	Custom	9mm	2
Thermal	Custom	Custom	13mm	1
Thermal	Custom	Custom	19mm	7

### In brief

- Design Study and start point to initiate dialog and concretely define a Security Solution.
- 3D features
- Detailed Reports
- Imported list of camera manufacturer and models.

## Download FoxTool

To download FoxTool for free, please contact us via the website:

<http://www.foxstream.us.com/contact/>

or at [foxtool@foxstream.us.com](mailto:foxtool@foxstream.us.com) or +33 427 118 030.